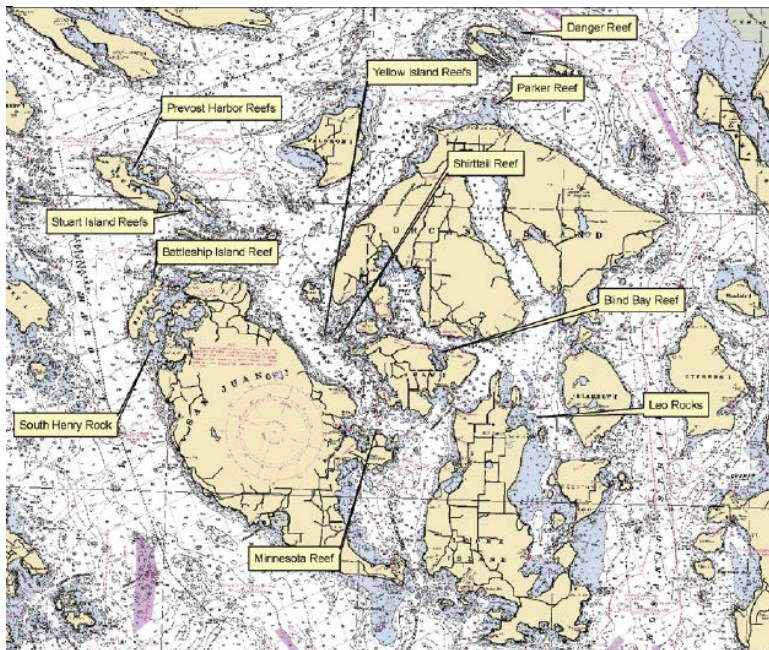


Yacht Shield Navigational Limits



KNOWLEDGE ★ COMMITMENT ★ RELIABILITY ★ SERVICE

redshield.com

YP 001

8.22.12

PUGET SOUND

The **Named Insured** hereby warrants that the **Insured Vessel** will be confined to the waters of Puget Sound and its tributaries, not more than 25 miles distance from Cape Flattery, and the inside waters of British Columbia east of Vancouver Island, and not north of 51 degrees north latitude, and not west of Hope Island.

YP002

8.22.12

Columbia & Willamette Rivers

The **Named Insured** hereby warrants that the **Insured Vessel** will be confined to the waters of the Columbia River, and the Willamette River and the tributaries thereto.

YP003

8.20.12

Columbia and Willamette plus 25 miles.

The **Named Insured** hereby warrants that the **Insured Vessel** will be confined to the waters of the Columbia River, and the Willamette River and the tributaries thereto, and not more than 25 miles distance from the mouth of the Columbia River.

YP 004

8.22.12

Columbia, Willamette to Puget Sound and BC

The **Names Insured** hereby warrants that the **Insured Vessel** will be confined to the waters of the Columbia River, the Willamette River and the tributaries thereto, not more than 25 miles distance from the mouth of the Columbia River.

From May 15th to September 15th inclusive, these navigational limits are extended to include the coastal waters of Washington but not more than 25 miles off shore, and Puget Sound and its tributaries, not more than 25 miles distance from Cape Flattery, the inside waters of British Columbia east of Vancouver Island, and not north of 51 degrees North Latitude and not west of Hope Island.

YP 005

8.22.12

Lake Coeur D'Alene

The **Names Insured** hereby warrants that the **Insured Vessel** will be confined to the waters of Lake Coeur D'Alene and not west of Post Falls, ID.

YP 006

8.20.12

Rivers and Lakes of WA, OR, and ID.

The **Named Insured** hereby warrants that the **Insured Vessel** will be confined to the rivers and lakes of the states of Washington, Oregon, and Idaho.

YP 007

8.22.12

Portland to Southeast Alaska

The **Named Insured** hereby warrants that the **Insured Vessel** will be confined to the waters of the Columbia River, the Willamette River and the tributaries thereto, not more than 25 miles distance from the mouth of the Columbia River.

From May 15th to September 15th inclusive, these navigational limits are extended to include the coastal waters of Washington not more than 25 miles off shore, Puget Sound and its tributaries, not more than 25 miles distance from Cape Flattery, the inside waters of British Columbia east of Vancouver Island, north from Hope Island, east of the Queen Charlotte Islands, and the inside waters of Southeast Alaska, and not west of Cape Spencer Alaska.

Puget Sound to Southeast Alaska

The **Named Insured** hereby warrants that the **Insured Vessel** will be confined to the waters of Puget Sound and its tributaries, not more than 25 miles distance from Cape Flattery, and the inside waters of British Columbia east of Vancouver Island, and not north of 51 degrees north latitude, and not west of Hope Island.

From May 15th to September 15th inclusive, these navigational limits are extended to include the inside waters of British Columbia east of Vancouver Island, then north from Hope Island, east of the Queen Charlotte Islands, and the inside waters of Southeast Alaska, and not west of Cape Spencer Alaska.

YP 009

8.22.12

PUGET SOUND AND VANOUVER ISLAND

The **Named Insured** hereby warrants that the **Insured Vessel** will be confined to the waters of Puget Sound and its tributaries, not more than 25 miles distance from Cape Flattery, the inside waters of British Columbia east of Vancouver Island, and not north of 51 degrees north latitude, and not west of Hope Island,

From May 15th to September 15th inclusive, these navigational limits are extended to include the coastal waters of British Columbia not north of 51 degrees North Latitude but not more than 25 miles off shore.

YP 010

8.22.12

Portland, West Vancouver Isl. To 51 Degrees

The **Named Insured** hereby warrants that the **Insured Vessel** will be confined to the waters of the Columbia River, the Willamette River and the tributaries thereto, not more than 25 miles distance from the mouth of the Columbia River.

From May 15th to September 15th inclusive, these navigational limits are extended to include the coastal waters of Washington not more than 25 miles off shore, Puget Sound and its tributaries, not more than 25 miles distance from Cape Flattery, and the waters of British Columbia not north of 51 degrees North Latitude and not more than 25 miles off shore.

YP O11

8.22.12

Puget Sound to Barkley Sound.

The **Named Insured** hereby warrants that the **Insured Vessel** will be confined to the waters of Puget Sound and its tributaries, not more than 25 miles distance from Cape Flattery, and the inside waters of British Columbia east of Vancouver Island, and not north of 51 degrees north latitude, and not west of Hope Island.

From May 15th to September 15th inclusive, these navigational limits are extended to include the coastal waters of Vancouver Island not north of Tofino, BC., and not more than 25 miles offshore.”

YP 012

8.22.12

Portland to Barkley Sound

The **Named Insured** hereby warrants that the **Insured Vessel** will be confined to the waters of the Columbia River, the Willamette River and the tributaries thereto, not more than 25 miles distance from the mouth of the Columbia River.

From May 15th to September 15th inclusive, these navigational limits are extended to include the coastal waters of Washington but not more than 25 miles off shore, and Puget Sound and its tributaries, not more than 25 miles distance from Cape Flattery, the inside waters of British Columbia east of Vancouver Island not north of 51 degrees north latitude, and not west of Hope Island, including the coastal waters of Vancouver Island not north of Tofino, BC., and not more than 25 miles offshore.